



Corinne Mensforth
@RinTheLabTech

Exploring Scientific Storytelling using Museum Curation Techniques

adelaide.edu.au

seekLIGHT

The Scenario

- Environmental biology teaching laboratories were housed in the Jordan building, built in 1963
- In 2012 the old Union Theatre was demolished and the new building was constructed – The Braggs
- Two floors of The Braggs building were dedicated to teaching laboratories
- Opportunity to build customised storage and display facilities for the teaching collection of skeletons, fixed specimens and models

University of Adelaide

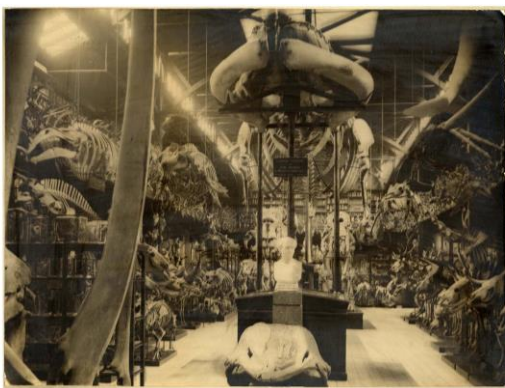
2



University of Adelaide

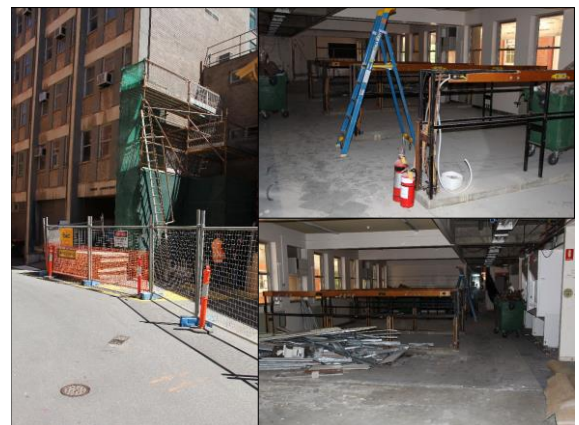


University of Adelaide



University of Adelaide

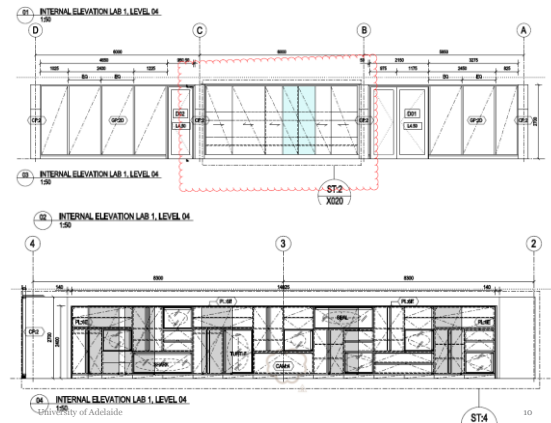
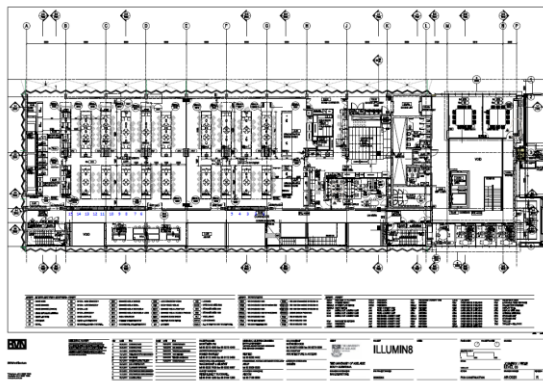
5





University of Adelaide

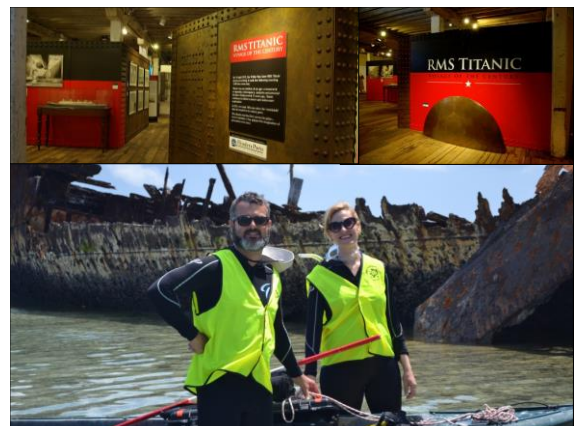
7



Step 1: Use your networks

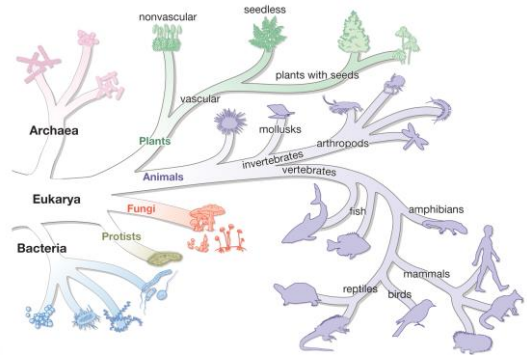
Dr Emily Jateff

- Curator at the SA Maritime Museum
- Studied maritime archaeology
- Highly experienced in creating temporary exhibitions





Step 2: Learn from the best



Step 2: Learn from the best

Objects can be sorted by:

- Chronology
- Themes
- Taxonomy
- Forms
- Materials
- Geography
- Function



University of Adelaide

15

University of Adelaide

16

Step 2: Learn from the best

Emily shared her knowledge in the following areas:

- Choosing which stories to tell
- How to design the displays
- Effective labelling
- Tools of the trade
- Timelines

University of Adelaide

17

Step 3: Choose your stories

Ideas included:

- Highlight research within the School
- Tell stories of the history of the School
- Groupings of objects based on evolutionary traits and differences
- Some object collections that already tell a story



University of Adelaide

Step 3: Choose your stories

Final display choices were:

- Fish research project
- Comparative anatomy
- History of the teaching collection
- Human evolution
- Embryology
- Thermogenic plants research project
- Dentition
- Bird nests research project

University of Adelaide

19

Tools of the Trade

- Museum Putty
- Display and label production
 - Professional production
 - Archetype
 - In-house production
 - Print labels
 - Mount on wood blocks
 - Plinths for objects

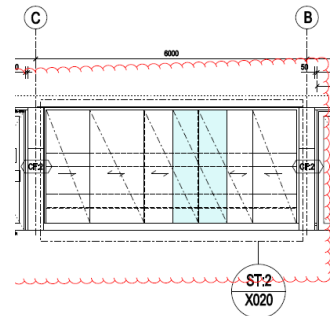


F-pattern eye tracking



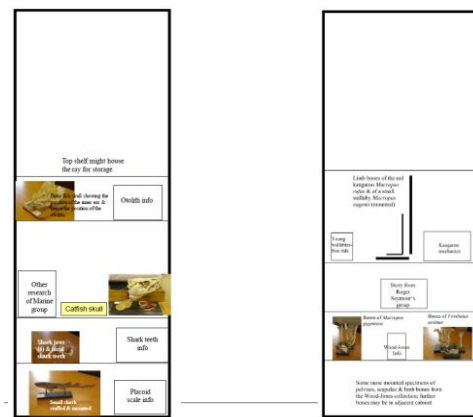
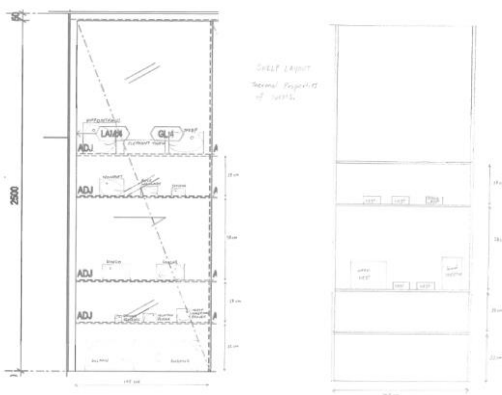
University of Adelaide

21



University of Adelaide

22



24

Writing for your audience

- Undergraduate science students
- University visitors and tours
 - Conferences
 - School groups
 - Bright Sparks holiday program
- Displays facing out into corridor, rather than in to lab
- Estimated 5-10 minutes looking at displays
- Have the most important objects and labels at eye level

University of Adelaide

25

Labelling

“Visitors will read text yet don’t want to be overwhelmed by it: well written text that is clear, simple, interesting and easy to read will be read, enjoyed and retained by most visitors.”

Lynda Kelly, Australian Museum, 2015

Design

- Keep same design throughout displays
- Matte
- Label stands vs decals on glass
- Edit, edit, edit!
- Cut out big words
- Several people to proofread the label text to make it more concise

University of Adelaide

26

Labelling

Story label

- 100-200 words
- Split into min. 2 paragraphs
- Introduce the topic or theme

Introduction

This label says what your exhibition is about. It can be as big as you like.

Theme label

This label introduces a major section of the exhibition. It carries general information and ideas.

Subtheme label

This label explains a topic within a theme. It is more specific than a theme label.

Object label

This label gives information about a specific object or range on display.

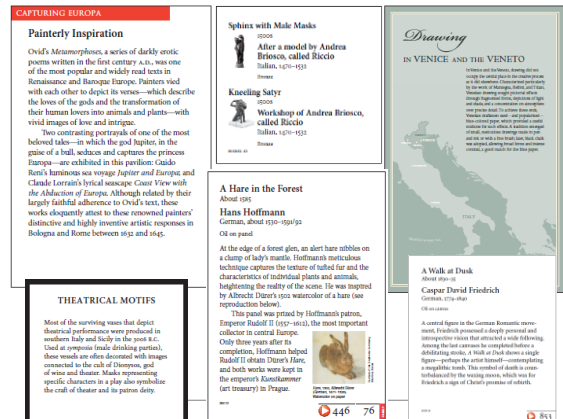
Object label

- 30-50 words
- Object-specific

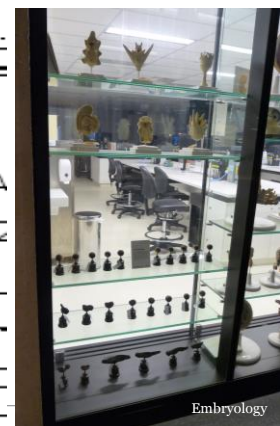
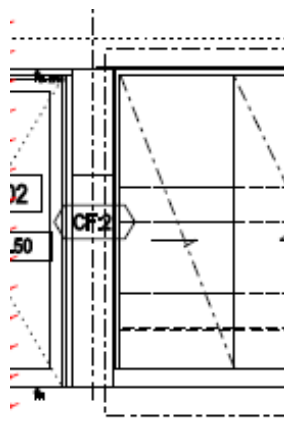
Powerhouse Museum

University of Adelaide

27



University of Adelaide



Embryology



Human Evolution



History of the School



Fish otolith research



Comparative Anatomy



Bird nest thermoregulation

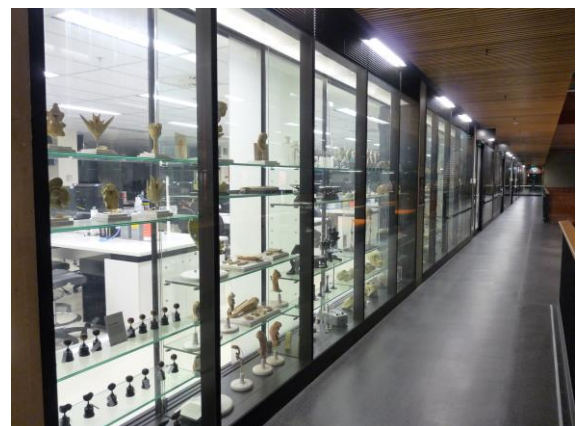
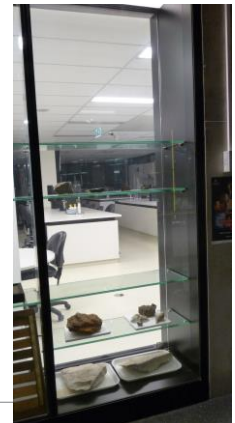


Dentition

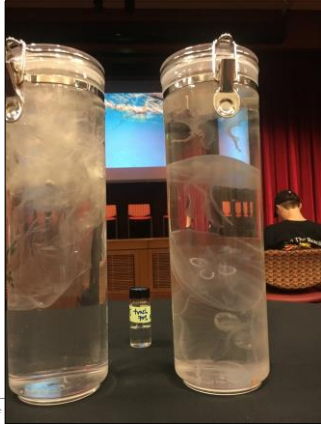
Timelines

- How often will displays be changed?
- How many stories can be told?
- How much material is available?
- Budget?
- Researchers leaving the School

University of Adelaide







Monterey
Bay Aquarium

University of Adelaide

43



University of Adelaide

45



Harvard Museum of Natural History



University of



Harvard Museum of Natural History



University of Adelaide

47



Harvard Museum of Natural History



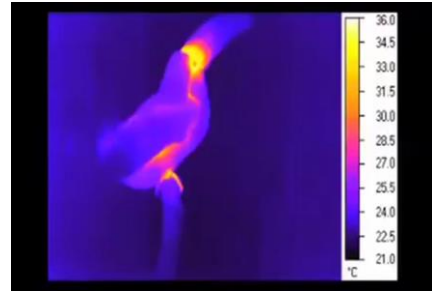
University of Adelaide

48



University of Adelaide

49



University of Adelaide

50



University of Adelaide

51



University of Adelaide

52



University of Adelaide

53



University of Adelaide

54



University of Adelaide

55

